

Coupling Beam Transfer Function Measurement

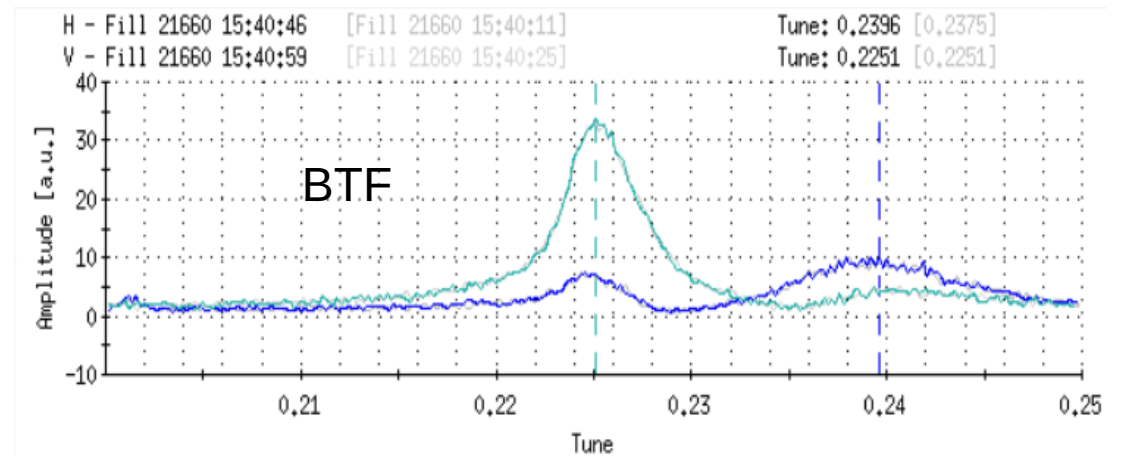
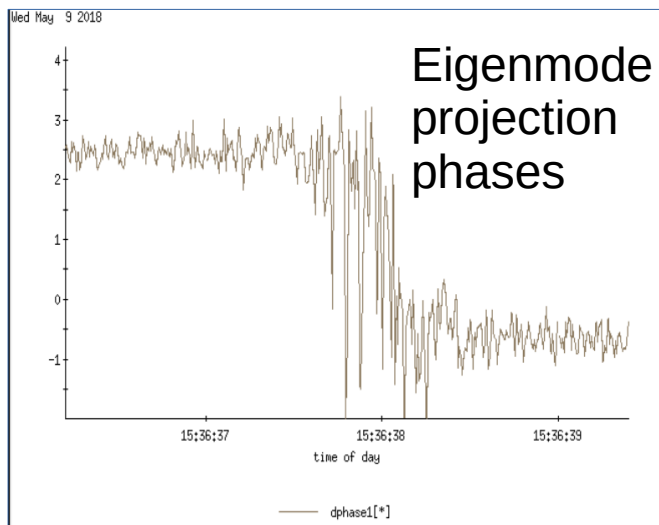
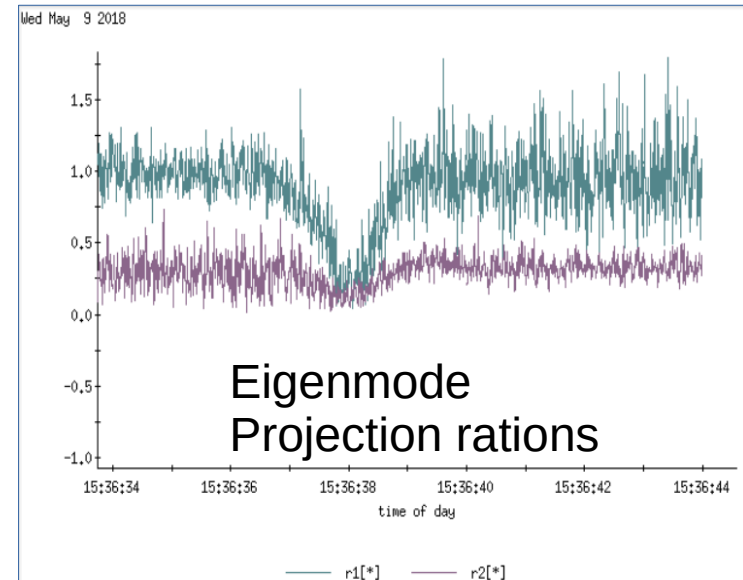
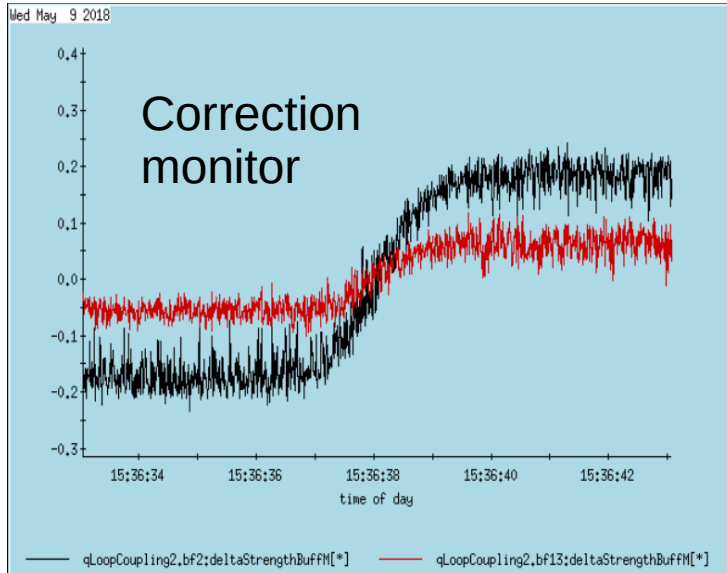
Yun, AI, Henry

2018 May 09, APEX Session

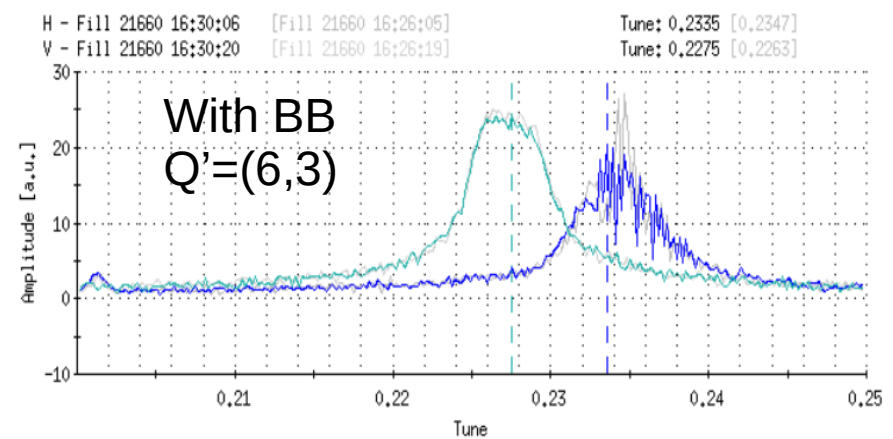
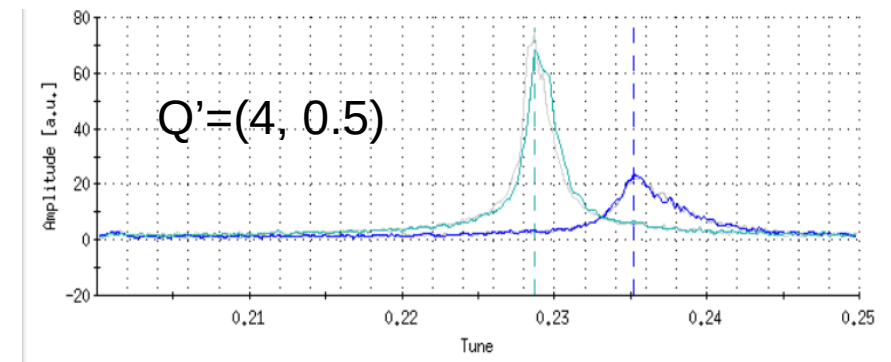
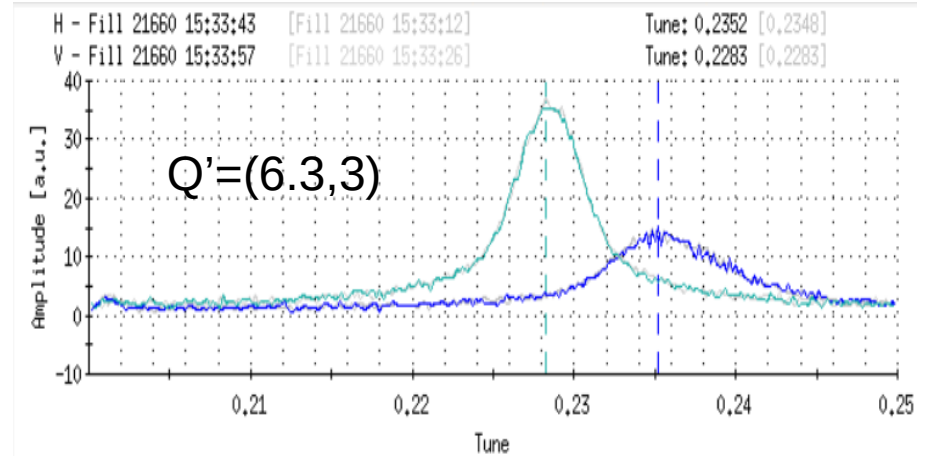
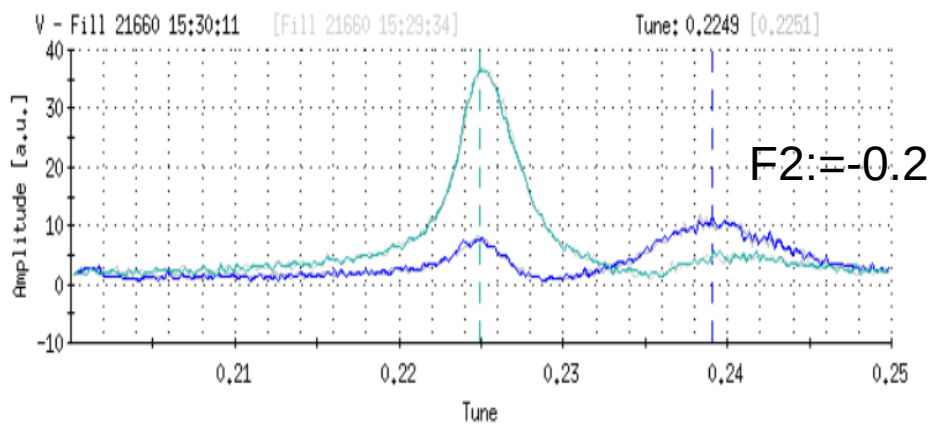
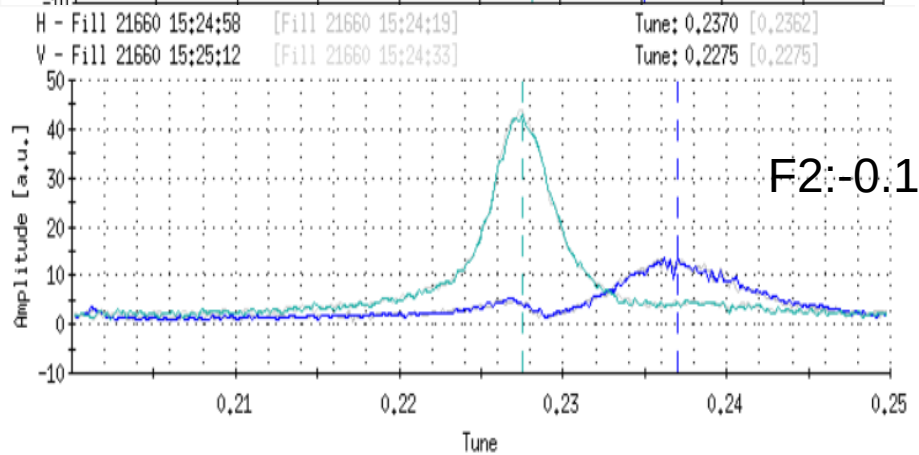
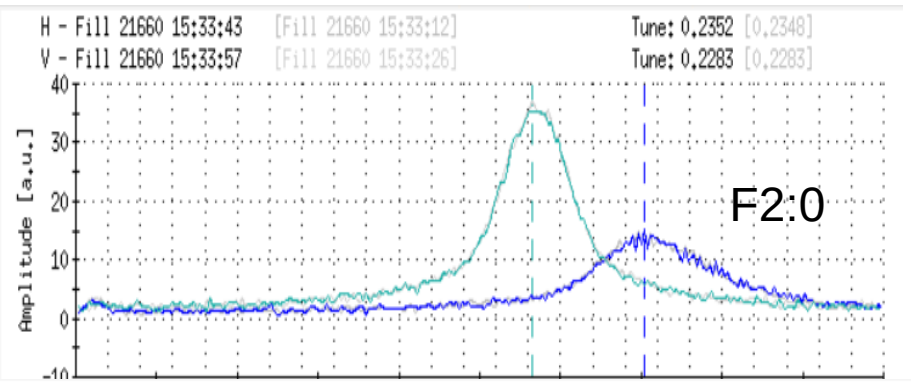
General

- We had 2 hours as planned.
- Ramped up 12*12 Ru+ ion bunches. Fill 21660. Experiment done at store stone of energy ramp.
- Scan family 2's strengths, measure eigenmode projections, and BTF (twice at each point).
- Data are clean and reliable. Good for benchmark with BTF simulation.
- No more time required for this experiment.

Measurements



More Plots



Eigenmode Projections

SkewQ setting	Meas. r1	Meas. r2	Meas. dphi1	Cal. r1	Cal. r2	Cal. dphi1
F2: +0.	0.1	0.1	—	0	0	—
F2: +0.1	0.7	0.2	2.4	0.60	0.21	2.1
F2: +0.2	1.0	0.3	2.4	0.95	0.33	2.1
F2: +0.3	1.2	0.35	2.4	1.15	0.40	2.1
F2: -0.1	0.6	0.25	-0.7	0.60	0.21	-1.1
F2: -0.2	1.0	0.35	-0.7	0.95	0.33	-1.1