

Coupling Beam Transfer Function (BTF) Measurement

Y. Luo, M. Minty

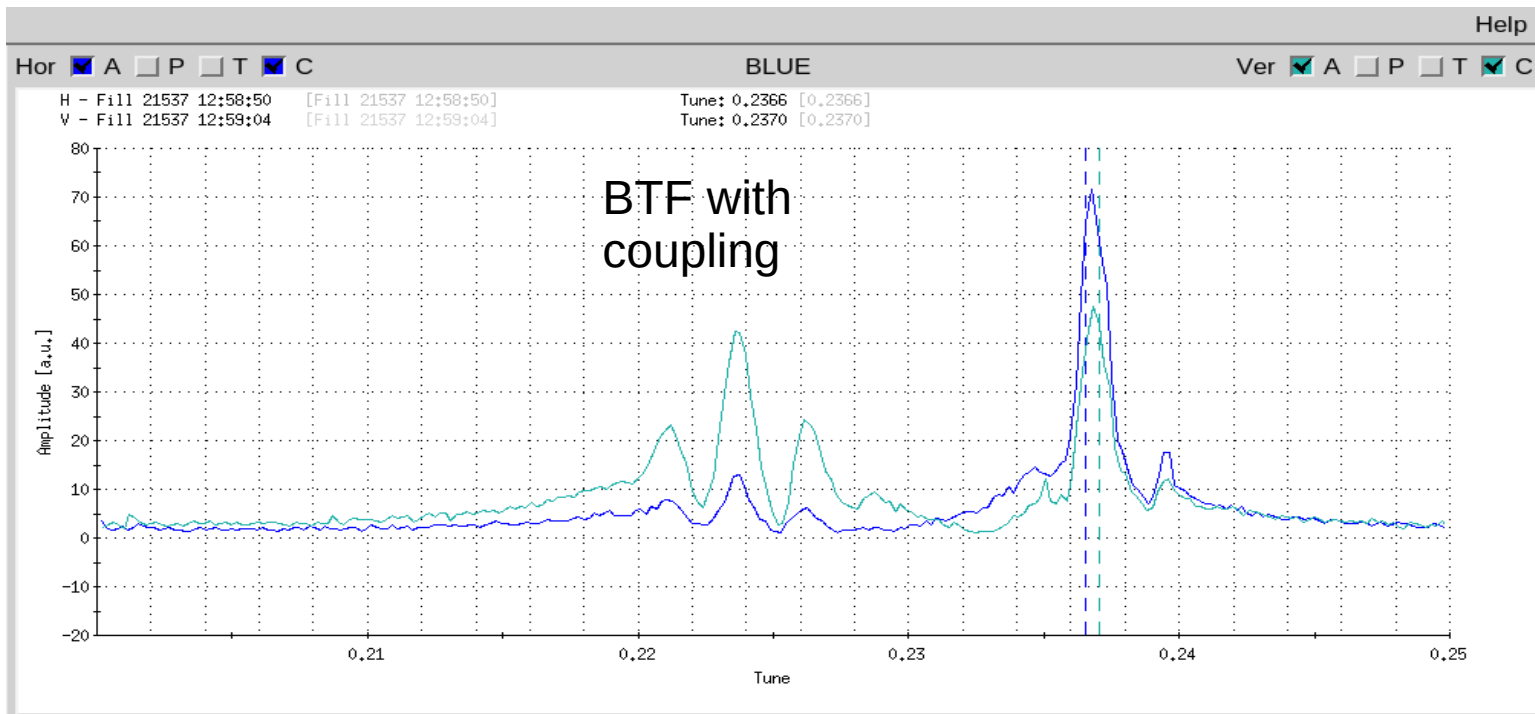
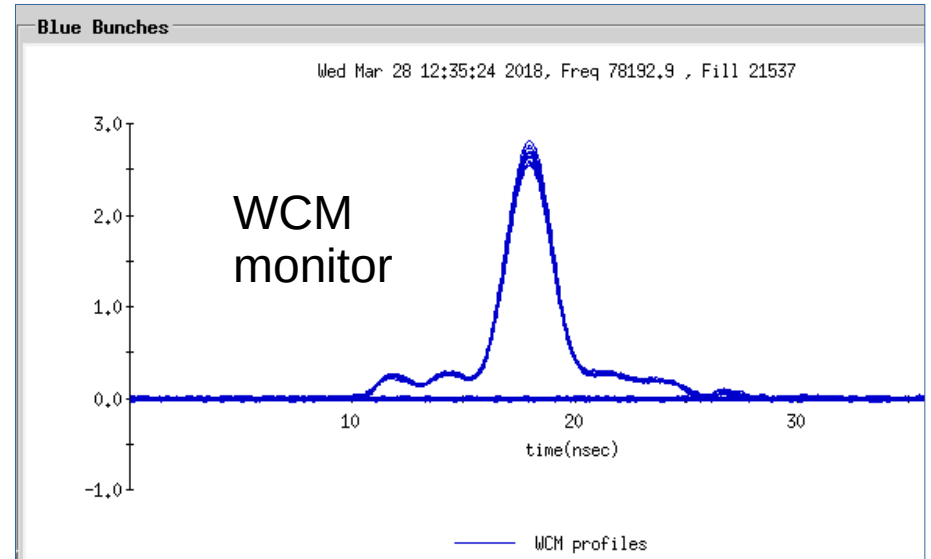
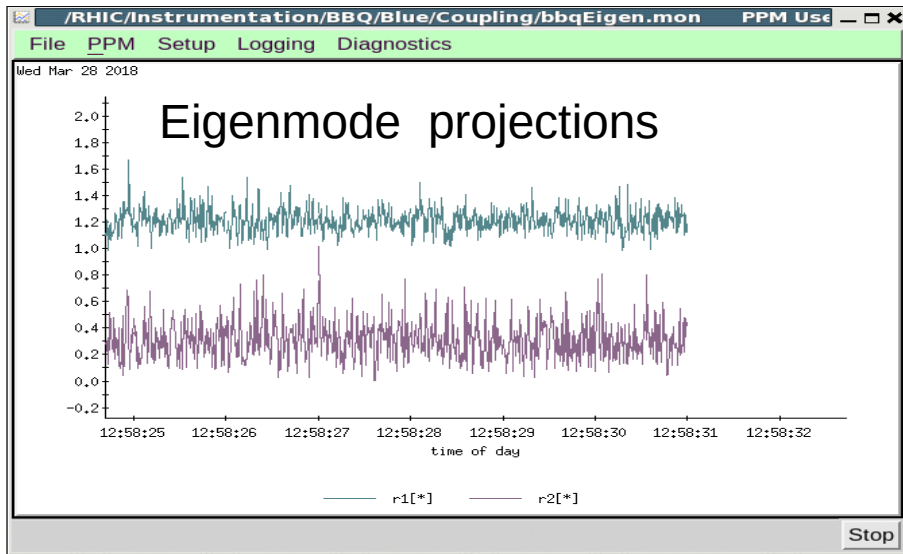
March 28, 2018 APEX session

General

- Beam condition:
 - ~ 1 hour at store with Ru+,
 - 12*12 bunched, re-bucketed, Blue ring
- Procedure:
 - set up experiment condition
 - scan blue skewQ F2, F13 in steps
 - measure eignmode projections, BTF

Note: no time to fine tune the operational coupling angles

Examples



Preliminary data processing

Setting	r1	r2
F2: +0.1	1.0	0.6
F2: +0.2	1.25	0.3
F2: +0.3	1.4	0.4
F13: +0.1	0.8	0.3
F13: +0.2	1.4	0.5
F13: +0.3	1.6	0.6

Note: simulations to be done to compare these measurements.

Summary

- Taken a full set of data with different skewQ settings as planned.
- Will do BTF simulations to compare the results.
- If time allows in future, would like to repeat without re-bucked beam:
 - 1) Why there are side peaks on both sides of main peak? Is it related to re-bucketed or not?
 - 2) How rebucketed beam affect BTF measurement