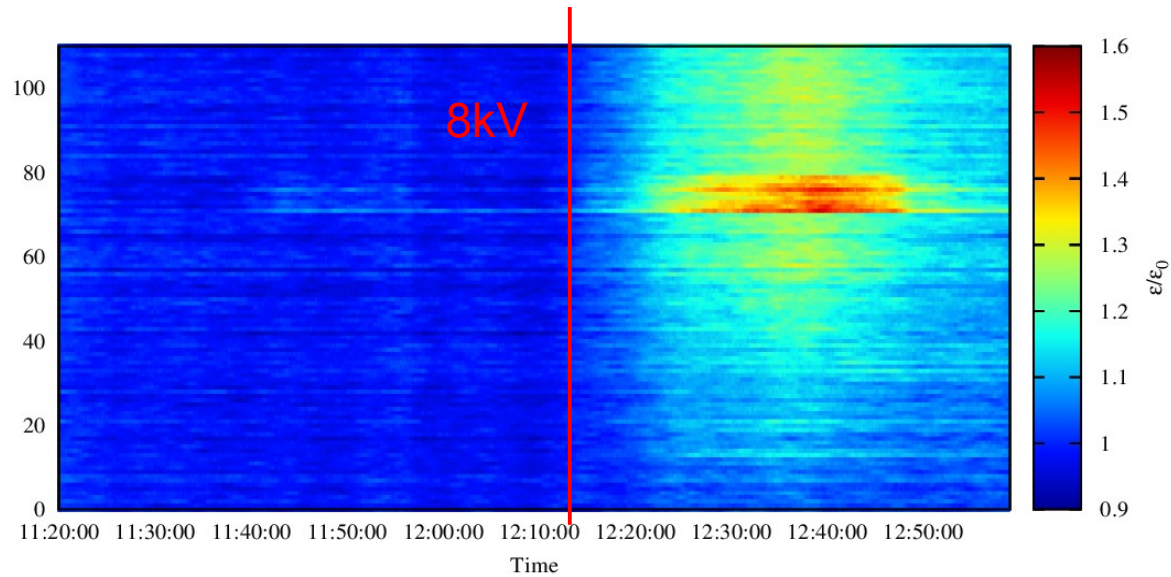


# Elens commissioning

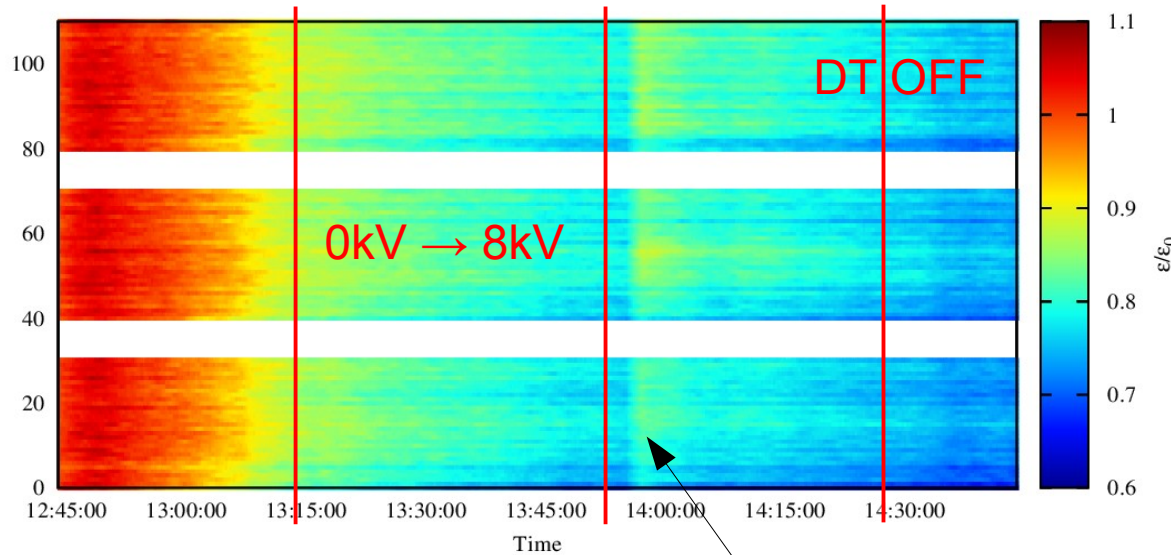
W. Fischer, X. Gu, Y. Luo, V. Pikin, P. Thieberger,  
S. White

# Emittance studies



- End of store study:
  - Emittance growth
  - Stronger at end of train

- Last APEX (different color scale):
  - No emittance growth (cooling)
  - Still some sign of dependency on position in the train
  - Drift tube voltage has no effect



- Things that have changed:
  - Filling pattern: "holes"
  - Collision pattern: all bunches have 2 collisions, tunes
  - Solenoid field: 3T → 4T

Vacuum spike