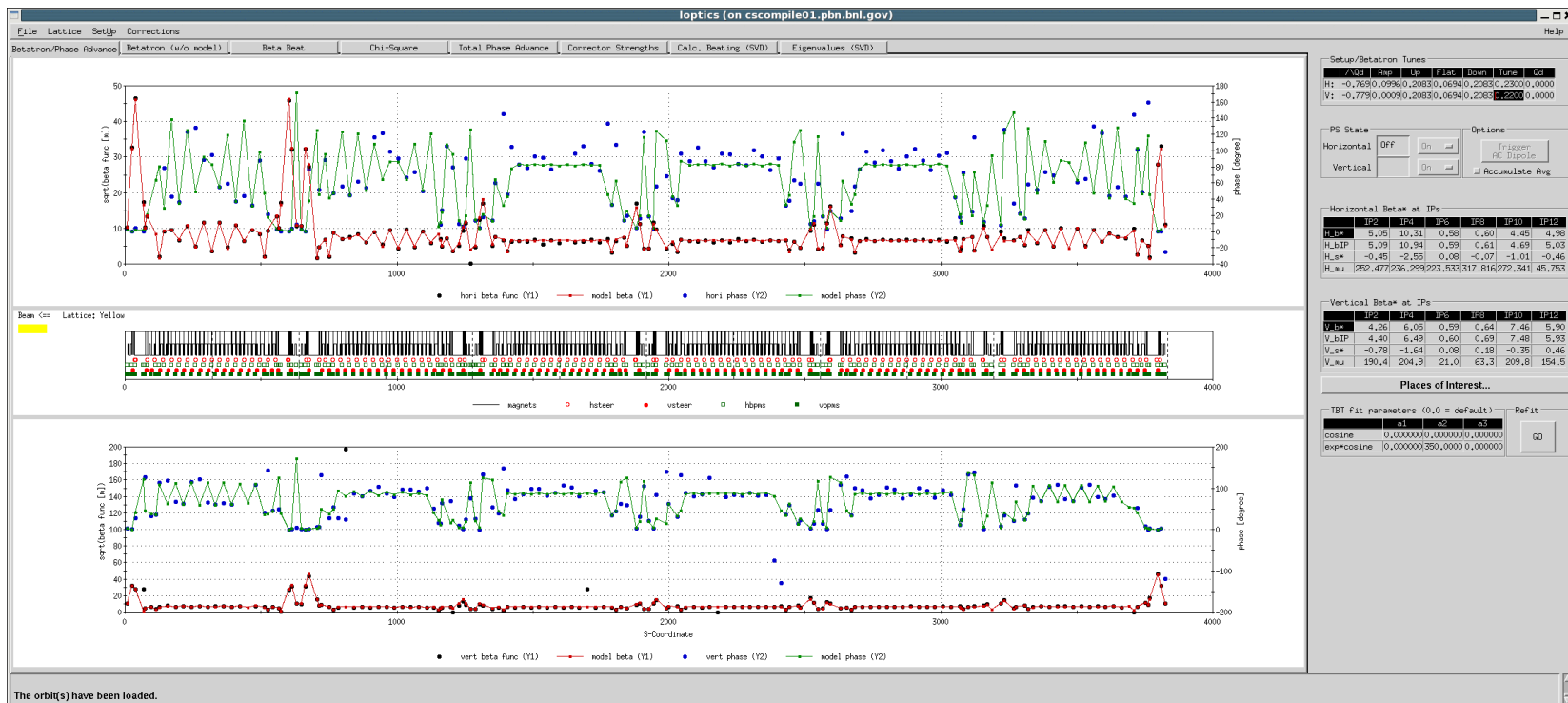




# Dynamic beta\* squeeze – APEX 4/23

*G. Robert-Demolaize, M. Bai, C. Harper, A. Marusic, X. Shen, S. White*

# Fully corrected 60cm optics in Yellow



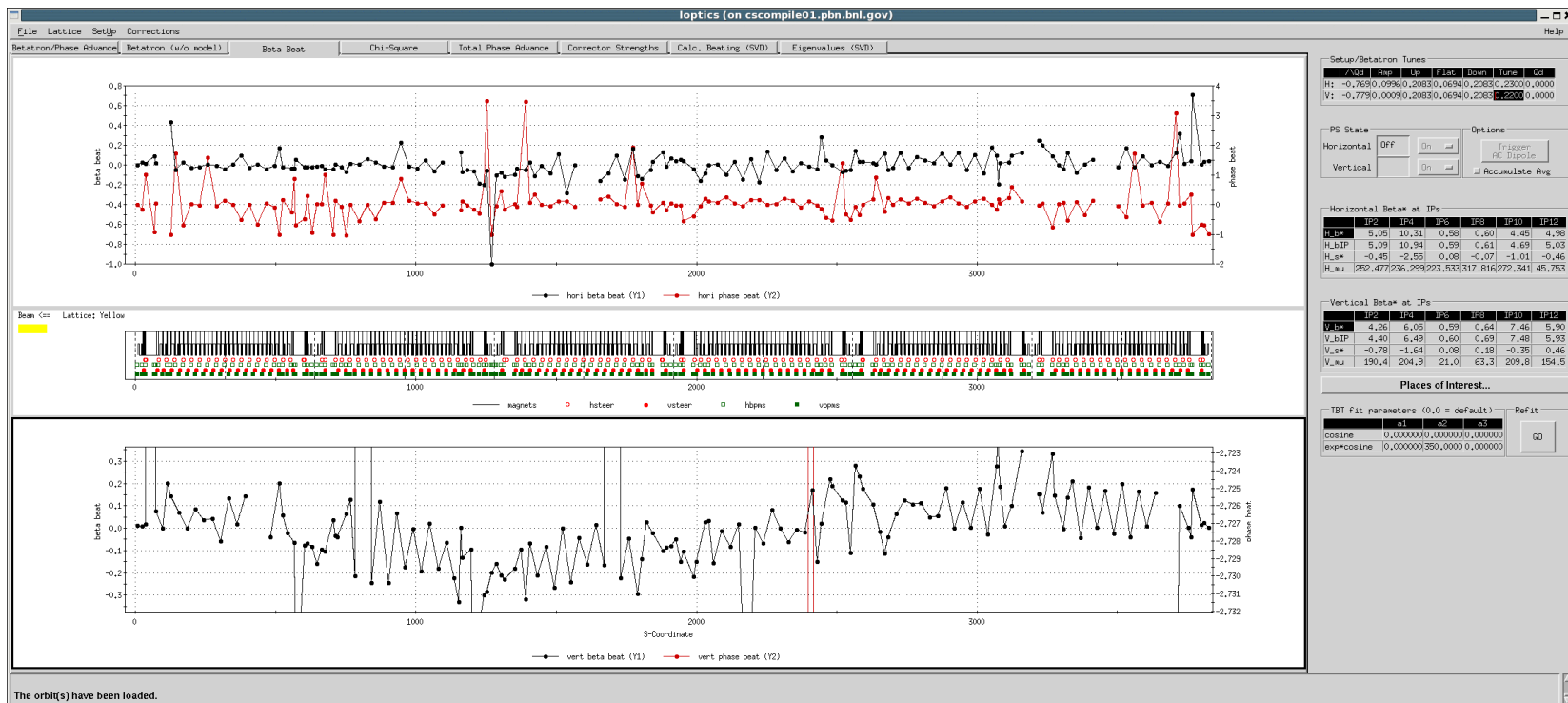
Horizontal Beta\* at IPs

	IP2	IP4	IP6	IP8	IP10	IP12
H_b*	5.05	10.31	0.58	0.60	4.45	4.98
H_bIP	5.09	10.94	0.59	0.61	4.69	5.03
H_s*	-0.45	-2.55	0.08	-0.07	-1.01	-0.46
H_mu	252.477	236.299	223.533	317.816	272.341	45.753

Vertical Beta\* at IPs

	IP2	IP4	IP6	IP8	IP10	IP12
V_b*	4.26	6.05	0.59	0.64	7.46	5.90
V_bIP	4.40	6.49	0.60	0.69	7.48	5.93
V_s*	-0.78	-1.64	0.08	0.18	-0.35	0.46
V_mu	190.4	204.9	21.0	63.3	209.8	154.5

# Fully corrected 60cm optics in Yellow



The orbit(s) have been loaded.

Horizontal Beta\* at IPs

	IP2	IP4	IP6	IP8	IP10	IP12
H_b*	5.05	10.31	0.58	0.60	4.45	4.98
H_bIP	5.09	10.94	0.59	0.61	4.69	5.03
H_s*	-0.45	-2.55	0.08	-0.07	-1.01	-0.46
H_mu	252.477	236.299	223.533	317.816	272.341	45.753

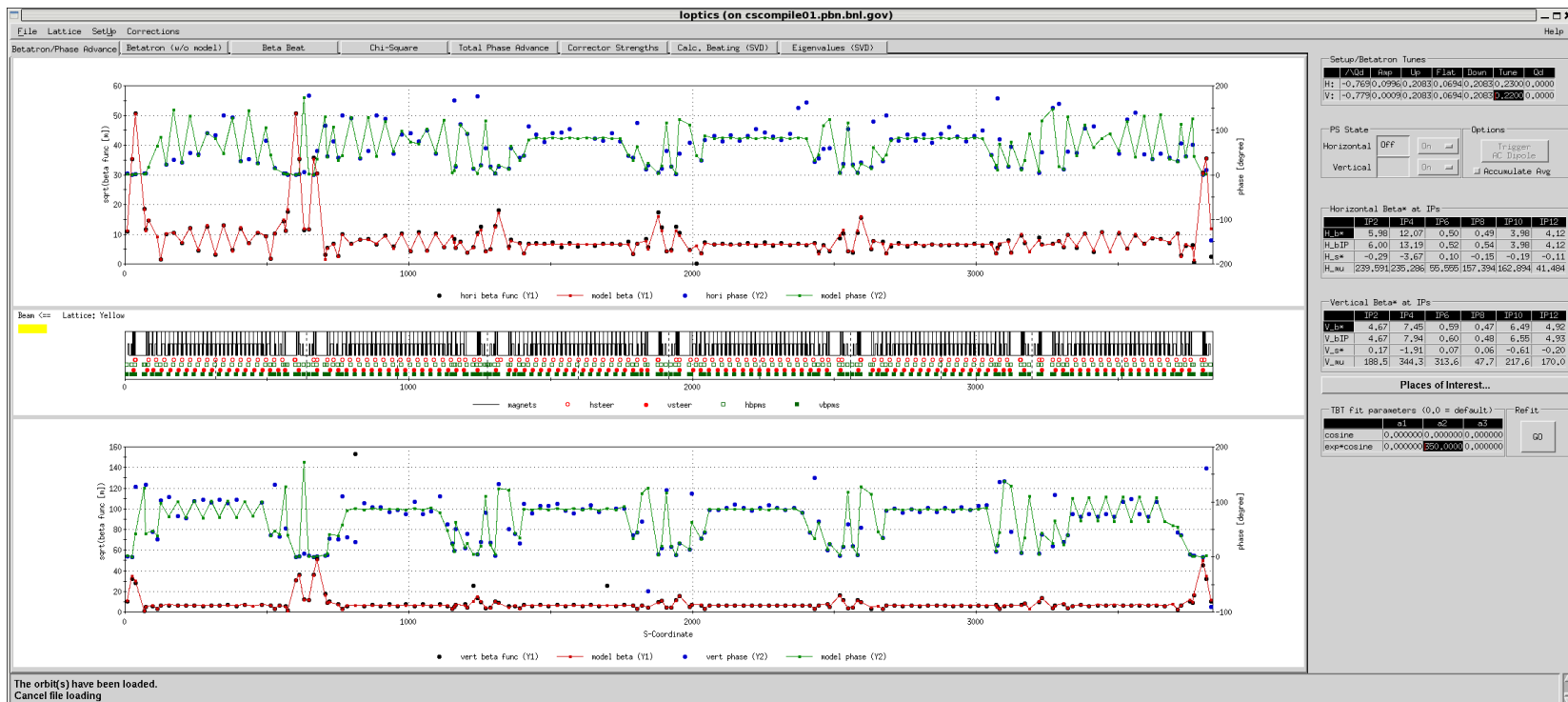
Vertical Beta\* at IPs

	IP2	IP4	IP6	IP8	IP10	IP12
V_b*	4.26	6.05	0.59	0.64	7.46	5.90
V_bIP	4.40	6.49	0.60	0.69	7.48	5.93
V_s*	-0.78	-1.64	0.08	0.18	-0.35	0.46
V_mu	190.4	204.9	21.0	63.3	209.8	154.5

Optics Table Stepstone Editor Compare/Revert

	Time	Stepstone	Gamma	TuneX	TuneY	ChromX	ChromY
1	0.0	flattop	107.396	28.2392	29.2279	2.4	8.0
2	20.0	beta60	107.396	28.2126	29.2587	-8.6	10.0
3	40.0	beta50	107.396	28.2076	29.2582	-18.3	-0.7
4	60.0	store	107.396	28.2133	29.2499	-14.0	13.0

# Fully corrected 50cm optics in Yellow



Horizontal Beta\* at IPs

	IP2	IP4	IP6	IP8	IP10	IP12
H_b*	5.98	12.07	0.50	0.49	3.98	4.12
H_bIP	6.00	13.19	0.52	0.54	3.98	4.12
H_s*	-0.29	-3.67	0.10	-0.15	-0.19	-0.11
H_mu	239,591	235,286	55,555	157,394	162,894	41,484

Vertical Beta\* at IPs

	IP2	IP4	IP6	IP8	IP10	IP12
V_b*	4.67	7.45	0.59	0.47	6.49	4.92
V_bIP	4.67	7.94	0.60	0.48	6.55	4.93
V_s*	0.17	-1.91	0.07	0.06	-0.61	-0.20
V_mu	188.5	344.3	313.6	47.7	217.6	170.0